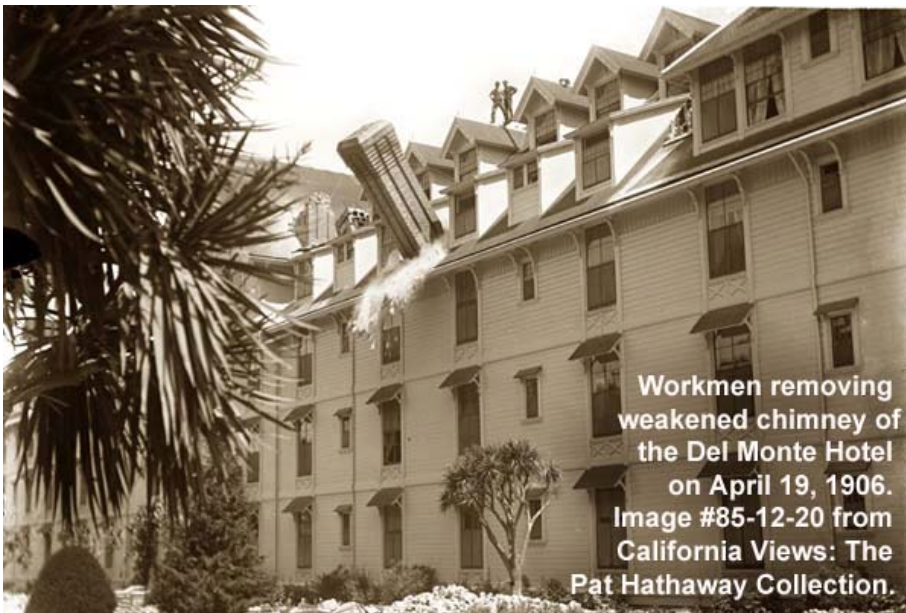




PRESS RELEASE

From: Pacific Grove Museum of Natural History
To: All Media
RE: Collateral Damage: The 1906 San Francisco Earthquake in Monterey, Santa Cruz, and San Benito Counties
PR Date: January 24, 2006. For immediate release.
Event Date/Time: Exhibit runs from March through May 2006
Lecture on April 18, 2006 from 7:00 – 9:00 p.m.
Contact: Esther Trosow, (831) 648-5716, ext 17 or archivist@pgmuseum.org

Collateral Damage: The S.F. Earthquake in Monterey, Santa Cruz, and San Benito Counties



The Pacific Grove Museum of Natural History (PGMNH) will commemorate the 100th anniversary of the 1906 San Francisco Earthquake with a free exhibit of historical photographs chronicling the damage suffered on the Central Coast. The exhibit runs from March through May 2006.

Most of the photographs in the exhibit are from California Views: The Pat Hathaway Collection, a unique archive with the most comprehensive historical photo collection of the Monterey Bay area, boasting more

than 80,000 images. Visit California Views' Monterey Bay earthquake webpage at: <http://www.caviews.com/Quake.html>

On the centennial of the quake (Tuesday, April 18th), PGMNH will offer a free lecture, beginning at 7:00 p.m.

On Friday, April 21st at 7:00 p.m., PGMNH will present a free exhibit opening for its new permanent Rollo Beck exhibit. This opening marks the beginning of Rollo Beck Days, a three-day event celebrating the renowned field ornithologist's contributions to museum collections and the field of avian science. Beck led California Academy of Sciences' 1906 expedition to the Galapagos Islands, and the specimens collected during this expedition formed the core of the institution's collections after the April 1906 fire storm destroyed the Academy.

For more information about the exhibit, contact Museum Archivist Esther Trosow at (831) 648-5716, ext. 17, or e-mail archivist@pgmuseum.org

The Pacific Grove Museum of Natural History is located at Forest & Central avenues, and is open free to the public Tuesdays through Saturdays from 10:00 a.m. – 5:00 p.m. Call (831) 648-5716 for Museum information, or pgmuseum@mbay.net / www.pgmuseum.org